

# Schunk Ultrasonic Welding Systems

## Anti-Side Splice Kit for Splice Welding Machines

# Perfection in Connection

## Anti-Side Splice Kit for Splice Welding Machines

Tests have shown that in some cases the lateral peel force of splices that were symmetrically arranged in the welding area is relatively low.

The illustration to the right shows a symmetrically arranged splice (4 \* 1.5 mm<sup>2</sup>) with two wires in each layer.

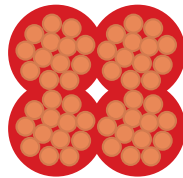


Fig. 1

## Schunk's Anti-Side Splice Kit Provides Three Measures to Avoid this Symmetry and, Thereby, to Improve the Lateral Peel Force:

Measure 1:

Visual operator instruction. The splice set-up and the correct wire insertion are displayed on the screen.

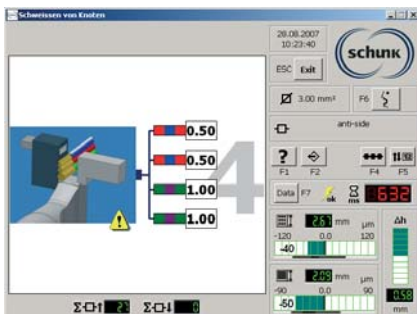


Fig. 2

Measure 2:

Installation of two bevel sliders beside the gliding jaw. Before the wires are inserted, this device is moved in forward position and thus optimize the machine working area..

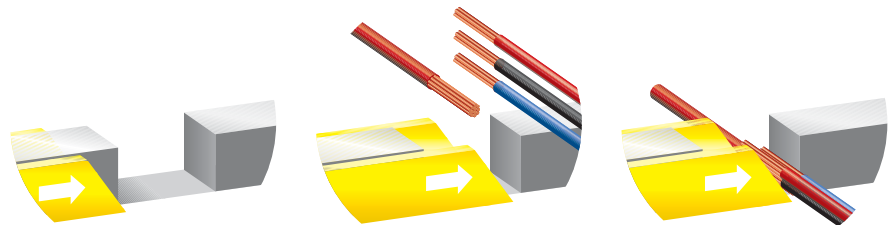
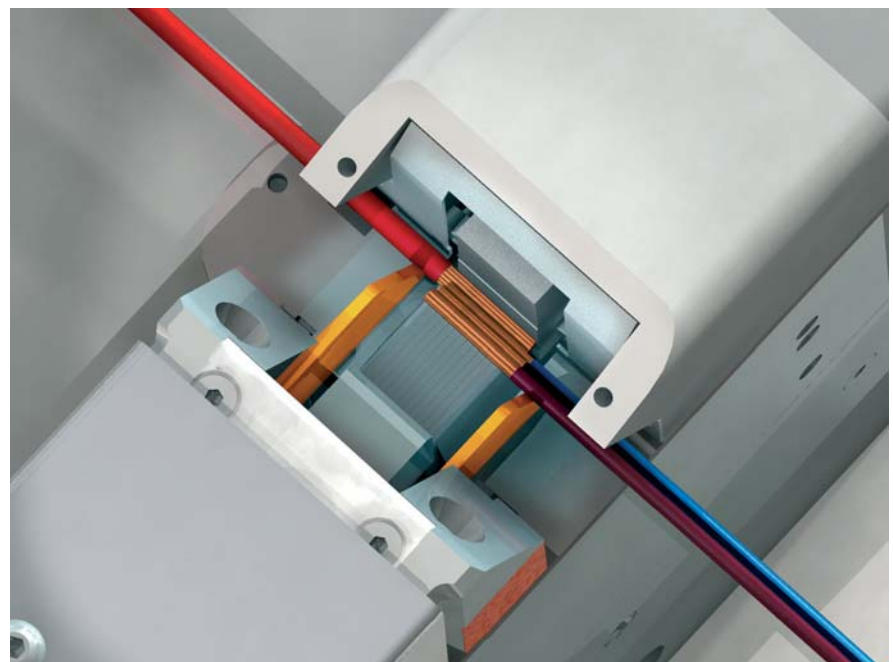


Fig. 3



Measure 3:  
 Gliding jaw setting up splice width  
 before inserting the wires.

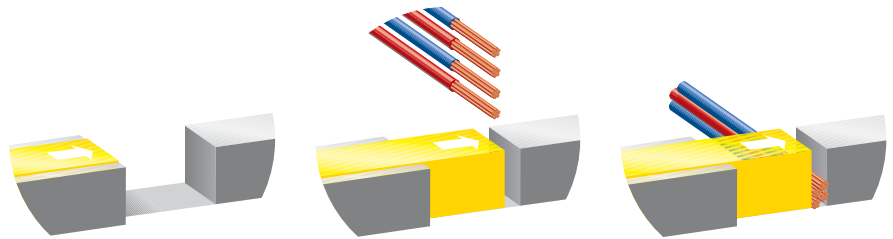
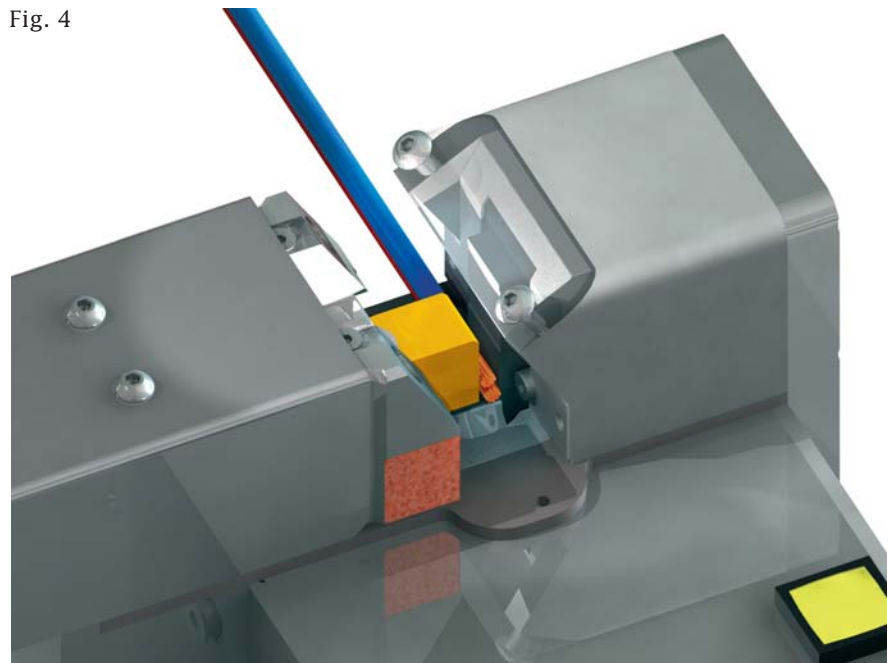
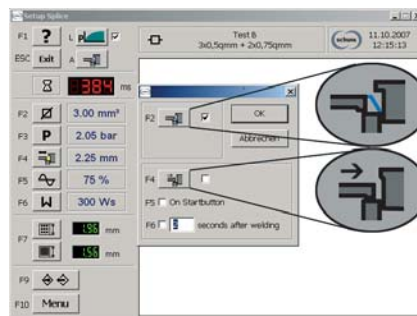


Fig. 4



The combination of above three measures facilitates an optimum wire alignment for all kind of splices in the working area of the machine. The mechanical Anti-Side Splice Kit (see fig. 3 and 4) can be applied for Schunk's ultrasonic splice welding systems MINIC-II, GLOBAL-Splicer-40 and GLOBAL-Splicer-50.



Easy handling and selection  
 by mouse click.

Fig. 5

Depending on the splice cross section, the best suited measure can be chosen. The selected option is stored automatically in the parameter settings of the corresponding splice.

The Anti-Side Splice Kit guarantees highest process safety especially for symmetrically composed splices.

---

**Schunk Sonosystems GmbH**

P.O.Box 1120  
D-35429 Wettenberg

Phone: +49 (0)641 / 803-0  
Fax: +49 (0)641 / 803-250

[sut@schunk-group.com](mailto:sut@schunk-group.com)  
[www.sut.biz](http://www.sut.biz)